

Leeds & Broomfield

50p

May 2024

Save The Date

LEEDS VILLAGE D-DAY 80 YEARS COMMEMORATION
6 JUNE • 2024



THE LIGHTING OF THE BEACONS

LIGHT YOUR LANTERNS & VILLAGE TO BRING LIGHT TO THE DARK
FISH & CHIPS IN THE VILLAGE HALL FOR NATIONAL FISH AND CHIP DAY

HONOURING THOSE THAT TOOK PART AND SUPPORTED FROM SEA, LAND & AIR

Church and Village News

PARISH DIRECTORY

| | | |
|--|--|-------------------------------|
| Clergy | Rev Mark Pavey | 07516 159879 |
| Verger - <i>Broomfield</i> | Derek Hadlow | 861955 |
| Borough Councillor | Gill Fort | 861605 |
| County Councillor - Leeds | Gary Cooke | 01622 694480/ 07803 007031 |
| County Councillor - Broomfield | Shellina Prendergast | 07970 461160 |
| Craft & Natter | Jane Newsome | 862558 |
| Cricket Club - Secretary | Sarah O'Connell | 880340 |
| Football Club(Men & Ladies) | Colin Pitchers | 670700 |
| Friends of Leeds & Broomfield Churches | Pauline Royer | 07711 830436 |
| Leeds Allotments | Strutt and Parker | 01227 473741 |
| Leeds Amateur Dramatic Group | Lesley Finlay | 862467 |
| Leeds Playing Field | Sherrie Babington | 01634 863719 |
| Leeds & Broomfield Bellringers | Andrew Saunders | 07948 715268 |
| Leeds W.I. | Susan Wenham | 07905 479870 |
| Magazine Editor | Judi Taylor | 862316 |
| Magazine Advertising | Judi Taylor | 862316 |
| Magazine Distribution | Humphrey Goodhew | 861624 |
| Memorial Hall – <i>Bookings</i> | Jane Steele | 863481 |
| - <i>Chairman</i> | Steve Bond | 07472 760460 |
| Parish Council Chair - Leeds | Bob China | 880929 |
| Parish Council Chair – Broomfield & Kingswood | Tina Clark | 842980 |
| Parish Clerk - Leeds | Sherrie Babington | 01634 867173 |
| Parish Clerk – Broomfield & Kingswood | Hayley Roberts | 474190 |
| Primary School | Fiona Steer | 861398 |
| Roman Catholic Priest | Fr. Peter Growney | 752637 |
| Scout Group | Alan Poulton | 843019 |
| Sutton Valence Gardeners' Association | Ross Vaughan | 693837 |
| Website : www.leedskent.org.uk | leedsparishcouncil@gmail.com | |

MAGAZINE MATERIAL

Please email copy for the magazine by the 12th of the month to the Editor, Mrs Judi Taylor.

Email: juditaylor4@outlook.com



NORTH DOWNS TEAM MINISTRY

Spring has Sprung

Isn't Spring a wonderful time of year? The weather is improving (somedays), the evenings are getting lighter and there are signs of new growth everywhere in the gardens, at the roadsides and in the



woodlands. The bluebells are particularly stunning at this time of year around Leeds, Broomfield and Kingswood. The apple and cherry blossom on the trees is also amazing!

I must admit at not being much of a gardener but a few months ago a small team of us planted some tulip bulbs in the grounds of Kingswood & Broomfield Village Hall. I didn't have much hope and seeing the fruits of our labours this year so was amazed when these came to life recently, in all colours of the rainbow.

It set me thinking about a verse in the bible where Jesus says, 'Very truly I tell you, unless a grain of wheat falls to the ground and dies, it remains a single seed. But if it dies, it produces many seeds' (John 12:24). The principle of life through death being established in God's creation where the seed must die in order for the plant to grow. Just look at the fields around where we live to see this principle at work, the farmer plants the seeds (when it stops raining) and in due time the crops wonderfully grow given the right climate.

Of course, Jesus wasn't just talking about plant life but was predicting his death and resurrection which we remembered and celebrated at Easter time. But shouldn't we be celebrating the good

news of Jesus rising from the dead not just at Easter, or during Spring time, but every day of the year! Some have said Christians should be Easter people. That doesn't mean we should be eating



Easter eggs and hot cross buns throughout the year, perish the thought, but rather we should remember the cross and celebrate Jesus' resurrection every day.

Another great thing about this time of the year is the number of Bank Holidays, with two during May for May Day and the Spring Bank Holiday. There should also be another one for Pentecost, what is that? It's when Christians celebrate the coming of the Holy Spirit on the apostles and is the birthday of the Church being the start of it's mission in the world. This year it's on Sunday 19 May, so not a day off I am afraid but please come and join the celebration at one of our Church services.

Pentecost was, therefore, a momentous event as, despite there being gathered in Jerusalem people from 'every nation under heaven' ... each one heard their own language being spoken' (Acts 2). I don't know about you but I was always pretty poor at languages so how wonderful that all who were present understood one another.

Perhaps there's at least two things we can learn from this wonderful time of year; a greater appreciation of God's creation and a better understanding of one another.

Enjoy the countryside and the Bank Holidays!

With every blessing

*Peter Roberts,
Kingswood Church*

BRIDGES

FRIENDS • CONNECTIONS • FOOD

Our restaurant is a haven for connection and togetherness.

Whether you're enjoying an intimate dinner for two or hosting a special event, we strive to create an environment where cherished memories are made.



From tasty lunches to satisfying dinners,
we've got your cravings covered.

For reservations please call **01622 948 505**

For opening times visit, www.lediangardens.co.uk

**Ledian
Gardens** 

Ledian Gardens, Upper Street,
Leeds, near Maidstone, ME17 1RZ

**Free
Cake!**

A treat from us....

Enjoy a free slice of cake
with any coffee purchase*

*Promotion valid on display of voucher.
Subject to availability. Available until 30 April 2024.

Eric's

Church Services in May

| | | | |
|-----------------|---|---------------|-------------------------|
| 5 May | Easter 4 | | |
| Readings | Acts 10:44 – end, 1 John 5:1-6, John 15:9-17 | | |
| Services | 9.30am | Otham | Communion |
| | 9.30am | Leeds | Worship |
| | 11.00am | Hollingbourne | Eucharist |
| | 11.00am | Langley | Morning celebration |
| 9 May | Ascension Day – Services to be advised | | |
| Readings | Acts 1.1-11, Luke 24.44-end | | |
| 12 May | Easter 5 | | |
| Readings | Acts 1:15-17 21-end, 1 John 5:9-13, John 17:6-19 | | |
| Services | 9.30am | Otham | Communion |
| | 11.00am | Hollingbourne | Eucharist |
| | 11.00am | Langley | Celebration & communion |
| | 3.30pm | Broomfield | Afternoon worship |
| 19 May | Penetcost | | |
| Readings | Acts 2:1-21, Romans 8:22-27 John 15:26-27, 16:4b-15 | | |
| Services | 9.30am | Otham | Communion |
| | 9.30am | Leeds | Worship and communion |
| | 11.00am | Hollingbourne | Eucharist |
| | 11.00am | Langley | Morning celebration |
| 26 May | Trinity Sunday | | |
| Readings | Isaiah 6:1-8, Romans 8:12-17, John 3:1-17 | | |
| | 9.30am | Otham | Communion |
| | 11.00am | Kingswood | Family Communion |
| | 11.00am | Langley | Morning celebration |
| | 11.00am | Hollingbourne | Eucharist |



This Month's Duties

St Nicholas

Readers

| | | | |
|------------|-----------|--------|--------|
| May | 5 | D King | 9.30am |
| | 19 | D King | 9.30am |

Church Cleaning

May Mr & Mrs King

War Memorial

May Mrs J Dabbs

Brass & Silver

May **12/19**

Mrs Turner

Mrs B Turner

26/2

Mrs Ryan

Mrs F Crossley

Flowers

St Margaret's

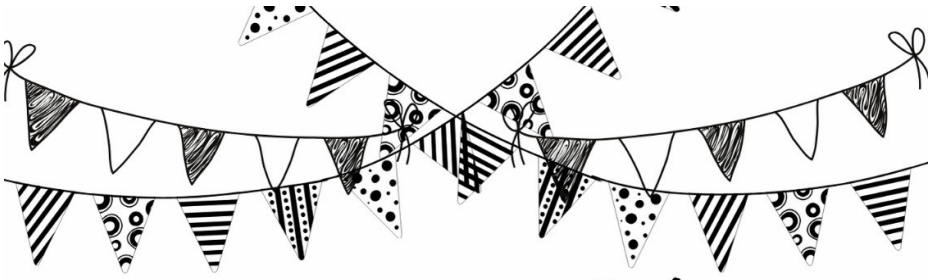
Readers

May **12** Dr C Oakland 3.30pm

Church Cleaning

12 Mr & Mrs Bowman-Taylor 3.30pm





Save the Date

LEEDS VILLAGE SUMMER CELEBRATION

LET'S BRING THE VILLAGE
TOGETHER FOR
'A BIG LUNCH'
ON THE PLAYING FIELDS

Saturday 24th August 2024

12.30pm - 5pm



Can you help? We need you!

It takes a Village! Please get in touch if you can help in any way.
leedsvillageevents@gmail.com





Spring Has Sprung!

Spring has officially sprung and we're super excited to now be serving our brand new Spring menu!

Not only do we have 5 delicious new pizzas, our Spring menu is filled with the most fresh, local produce perfect for those sunny days! From coriander cured salmon to corn-fed chicken supreme to wild garlic pesto tagliatelle, we've got something for every craving!

Find out more and book at elitepubs.com

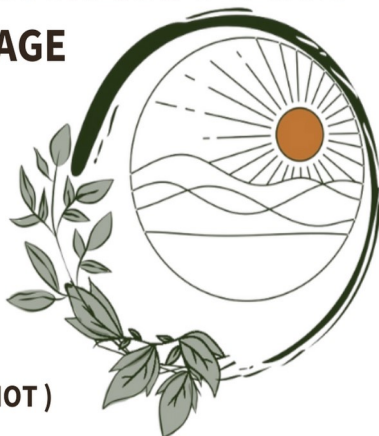


OSTEOPATHY & PHYSIOTHERAPY CLINIC BASED IN LEEDS VILLAGE



Treatments We Offer

- Osteopathy
- Medical Acupuncture
- Physiotherapy
- Massage Therapy
- Reflexology
- Postnatal Check (Mummy MOT)



WWW.LEDIANHEALTHHUB.CO.UK

[CALL US: 01622 427580](tel:01622427580)

LEEDS AND BROOMFIELD MEMORIAL HALL

The Annual General Meeting of the
Village Hall will be held on Thursday
23 May 2024 at 8.00 pm

All villagers and anyone with an
interest in the Hall
are welcome to attend.



PILGRIMS WAY ARTISTS

Invite you to their

Annual Summer Exhibition

at the Tithe Barn, Lenham, Kent, ME17 2QD

FRIDAY 17TH MAY - 27TH MAY

10am to 5pm DAILY - Entrance and Car Park FREE

Closes 1pm 27th May.

Over 30 artists will exhibit their work from Friday 17th May - Monday 27th May every day from 10am to 5pm with the exception of Monday 27th when the show will end at 1pm.

Private View Day is by invitation on Thursday 16th May 6pm - 9pm

The show promises an exciting and varied range of Art on display, from Paintings, Ceramics, Sculpture and Printmaking.

The popular Illustrated Guide will be available at a cost of £2.

During the second weekend there will be a Craft Event held in the Cobbled Barn adjacent to the main Tithe Barn. Friday 24th, Saturday 25th, Sunday 26th from 10am - 5pm.

Refreshments will be available throughout the show with a picnic area outside the Barn accessible on warm, sunny days.

Parking is Free with limited Disabled access. Dogs with the exception of the resident Farm Dogs will not be allowed in the barn and must be on a lead in the grounds.

for more information:

W : www.pilgrimswayartists.org.uk

T : Trevor Hartley 07803 293369

LEEDS CASTLE

It is lovely to see the spring flowers out in full bloom. The daffodils are sadly long gone, but the tulips are out in force and the bluebells are adorning all of the woodland areas around the estate. Soon the bearded irises will be making an appearance, quite my favourite time of year in the gardens!

While the weather has been somewhat variable over Easter, it is at least warming up finally, after a long, cold, rainy winter period. We have had a very busy Easter period at the Castle, an excellent start to the trading year. The Easter treasure hunt, featuring Boots & Danny, the Great Danes, has been extremely popular, with its interactive installations & vibrant Easter floral displays as well as encounters with live characters.

Coming up fast are a number of major events included in your admission ticket, which is valid for twelve months. These include the Queens Joust, (25-27 May), the long-awaited return of Motors by the Moat (10-11 August), a new Sculpture Trail (26 August to 6 October) and the magical 2024 Christmas Castle experience, the Nutcracker. (23 November to 31 December 2024).

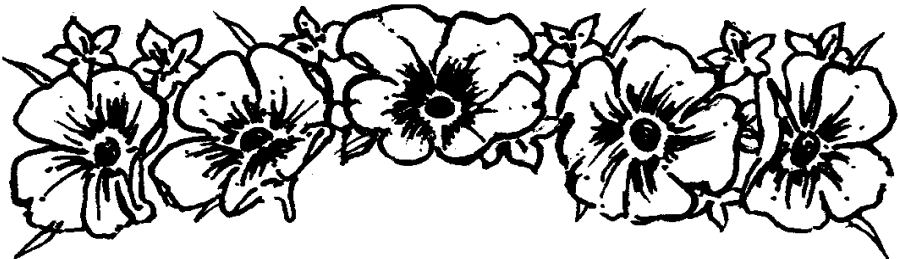
In wildlife news, gorgeous Egyptian geese bred on the estate for the first time last year and this year have produced a much larger brood, of which seven goslings are currently

swimming around on the moat. The mallard ducks are currently nesting in various planters and the wild swans have set up home under the new Lakeside Lodges. We have been all missing the lovely black swans, the population of which has been wiped out by avian flu twice now. We have one surviving black swan for whom we have purchased a mate and they are getting on very well, so we hope for a brood of cygnets this season. If this is successful, we will wait until the cygnets have grown to an adult size before releasing them onto the moat, to give them the best chance of survival.

In other wildlife news, we have been pleased to see 3 wild red kites soaring around the skies over the Castle and are hoping that they have chosen to nest on the estate. These beautiful birds are a protected species, since their numbers have declined so drastically over the years, due to increased use of pesticides and poaching. They are most common in Oxfordshire & the Chilterns, but remain rare in Kent, so we are delighted to welcome them.

Hoping that you all enjoy the upcoming May Bank Holidays!

Helen Bonser-Wilton, Chief Executive



North Downs Walk

for Cancer Research UK

Rotary
Weald of Kent



SUNDAY 9th JUNE 2024
Online Registration now open

www.wealdofkentrotary.org.uk/north-downs-walk



A sponsored walk, starting and finishing at Harrietsham Village Hall, followed by a ploughman's lunch and live musical entertainment.

Choice of 1,3,6 and 9 mile routes.

50% of sponsorship money is donated to Cancer Research UK, and the other 50% to your choice of charity or good cause.

An opportunity for your fundraising, with Rotary providing the organisation



All expenses are underwritten by our event sponsor, Family Funeral Service.

Every penny raised in sponsorship will go to the charities.



Cancer Research UK is a registered charity in England and Wales (108464), Scotland (SC041666), the Isle of Man (1103) and Jersey (247).
Registered address: 2 Redman Place, London E20 1JQ



PRIVATE DINING EVENTS AT LEEDS CASTLE

Elevate your special occasions at Leeds Castle, where celebrations come to life in extraordinary fashion. Whether it's a lively birthday bash or an intimate anniversary dinner, our exquisite venues and expert caterers ensure a celebration that delights.

Make your choice between the iconic castle or the enchanting Maiden's Tower for a celebration that reflects the distinctive charm of Leeds Castle.

Call Leeds Castle now to enquire on 01622 765400 or visit our website leeds-castle.com/hire-dining/private-parties

LEEDS  CASTLE

Notes from Leeds Parish Council

Welcome to newcomers to Leeds

Welcome to any new residents to the village. We hope that you will be happy here. Please don't be shrinking violets – come and support the village and its community in whatever way you wish.

Parish Council Meetings

Leeds Parish Council usually meets on the second Tuesday in the month at 7.00pm at the Memorial Hall, Leeds. This is your opportunity to bring to our attention any issues that you are concerned about. There is no Parish Council meeting in August or December.

Apologies

Apologies were received from Councillor Greeff. No Declarations of Interest.

Parish Councillor Vacancy

It was agreed to wait till the May elections before proceeding further on this.

Minutes of Previous Meeting

Agreed & signed as a true record.

Public Participation

Three members of the public attended, two representing Loose Lions FC.

The LLFC representatives described what they were looking for regards a long lease on the playing field, this was listened to by the councillors who requested the requirements in writing so that they could be reviewed with a response by June's PC meeting.

Highways Matters

Concern again expressed over the amount of potholes in and around the village roads and the lack of repair work being undertaken.

Road signs put up in Old Mill Rd week commencing 1 April advising road closed 3rd till 5th presumably to repair the potholes which had been marked the week before. Come the 3rd sign laid down and no further action!

Grit bins still empty, one at junction of Forge Lane & Old Mill Rd has been filled but since the increase of traffic in the area due to the Upper St closure the bin has been hit and requires replacing. No action now expected till the autumn.

If you have concerns about pot holes and empty/damaged grit bins please either use the KCC website or advise the Parish Clerk.

Clerk's Report

The Borough elections take place on May 2.

The Parish Council election was uncontested enabling the Councillors to be re-elected.

Chairman's Report

The Chairman thanked Councillor Ingram for her help in getting the Councillor's nomination papers submitted.

He went on to ask if the council could consider allocating any money for the new Leeds & Broomfield cricket pavilion and his disappointment over the Abbey Farm planning decision.

Financial Matters

The financial statement & payments were approved.

Report from KCC Councillor

Cllr Cooke did not attend the meeting.

Report from MBC Councillor

Cllr Gill Fort advised that a new refuse collection company had started and that collections would take time to settle down.

She would also look into why the food collection had increased from weekly to fortnightly.

Planning Matters

Several proposals passed to the members for consideration.

Parish Maintenance

The quotations for 2024/25 were discussed and proposals made for possible reductions mainly concerning the playing field and Penfold Hill.

Leeds Playground, Playing Field, Tennis Courts & Pavilion

Prices received by Sure Play for repair work associated with the children's play area, these deemed excessive, prices to be sought from local source.

The leak on the Pavilion's external tap has been repaired.

Street Lighting

Any street lights not working please inform the Clerk

Church Path Lighting

Order placed for lights, work expected to start 29 April. please note the footpath will be barrier'ed off so access will be around the south side of the church.

Resilience/ Emergency Plan

The existing MBC plan to be updated to suit.

Parish Council Events

D-Day celebrations 6 June 2024, residents group discussing events, notice posted.

Summer party event planned for August 24 on the sports field.

Date of next meeting

Please note that the Annual Meeting of the Parish will take place in the Village Hall on the 14 May 2024 at 7pm, residents welcome. This will be followed by the parish council meeting.



You're Invited to Join Our Community Charity



**Be part of
organising
fun, local
fundraising
events**

Previous annual events include:

- Beer Festival
- Afternoon Tea
- Winter fairs
- Curry and Soul evening



Friends of Leeds and Broomfield Churches Charity

No:1080363

Whether you're passionate about local historic buildings, looking to meet like-minded individuals, or simply want to have fun while making a difference, our charity group is the perfect place for you!

We need some more local support and therefore asking residents who care about Leeds and Broomfield Churches to join. Our charity was founded to raise money to help preserve the historic churches of these two villages and to prevent them from falling into disrepair.

We aim to raise money and have fun while doing it!

This is not a religious group.

The charity meets once every three months in either Leeds or Broomfield Village.

Join now

Contact Jenny for more information about joining
07970119467

If you don't wish to join the charity but would like to offer a donation please visit our website.

<https://www.friendslbc.co.uk/support-us>



It's not what you think!

We are a small, perfectly-formed, friendly group of local women, who meet in Leeds Village Hall on the second Thursday of the month.

Yes, we do eat cake. Yes we do drink tea. But we also laugh a lot, learn a lot and go out a lot.

Meeting Coming up:

Thursday 9 May

All welcome. Non-members: £4.50

7.30pm. Leeds Village Hall

Join our Facebook Page @LeedsWI
Email us at: leedsvillagewi@gmail.com

Or call Susan Wenham on 07905 479870

LEEDS CRAFT AND NATTER GROUP

WEDNESDAY 15 May

LEEDS VILLAGE HALL 11am-1pm

A hot drink and biscuits will be provided

Cost £3.00 to cover costs

For more details please contact

Jane Newsome 862558

Update from Helen Whately your local MP

Wherever you live you deserve a fast police response. This shouldn't change if you live in a town, village or rurally.



When something goes wrong you should be able to rely on help being there when you need it, but in recent years some of our rural communities have felt let down by police response times – [as local farmers told me last summer](#).

When tools and equipment go missing or you're threatened by intimidating behaviour help should be on hand quickly.

That's one of the reasons why in 2019 we promised to put 20,000 more police officers on our streets, and it was great to see that target hit last year. These officers are already helping to put this right.

There's been some really encouraging data nationally, with crime falling in England and Wales by 50% since 2010, and even since March 2020 theft has reduced by 50%, knife crime by 8% and domestic burglary by 30%.

We've also got record numbers of police officers on the beat here in Kent, and every ward now has its own named officer – something I campaigned for last year. Along with our local Police and Crime Commissioner Matthew Scott they're working hard to keep us safe, and I'm grateful for all that they do.

I'm pleased to see the data shows that neighbourhood crime – anti-social behaviour, vehicle crime and theft - is falling across Kent. Without the hard work of everybody across Kent Police this would

not be possible.

On top of more boots on the ground and bobbies on the beat we have seen a further £28 million allocated to the force's budget for 2024/2025 with further money coming from the Home Office's Violence Reduction Unit and the Safer Streets Fund.

More money and more officers are a great start, but the most important thing is that people across Faversham and Mid Kent feel safer and it's why I've made faster police response one of my [5 local priorities](#).

At the end of last year, I invited Maidstone parishes to the Downswood Community Centre to talk to Police and Crime Commissioner Matthew Scott and Maidstone District commander Mark McLellan.

It was great to hear Kent Police have increased the size of the Rural Policing Unit and they're also reducing the time taken to answer 101 calls.

At the end of last month, I saw rural policing in action when I visited the Rural Policing Team in Faversham to hear how they've been tackling rural crime locally. The introduction of Farm Watch is helping local farmers report crime digitally and get specialist rural teams to incidents quicker.

If you've got something you would like to raise with me about crime in your local area, please do get in touch with my office. The more we report crime the more effective our police can be.

Working together will help keep our communities safer.

Best wishes

Helen Whately MP

www.helenwhately.org.uk

Sutton Valence Gardeners
Association

Sunday 5 May 2024
Sutton Valence Village Hall
2.30PM

TALK

‘How I grow my dahlias’
by Darren Everest



Members and non-members welcome

Tea **Coffee** **Cake** **Raffle**

Members: don't forget to bring along your 'flower of the month' for our friendly competition

Membership to SVGA is £5 per year and gives 10% discount at Homeleigh Timber and Building supplies, Rumwood Nurseries in Langley, Millbrook garden centre, Marden, Coolings Potted Garden Nursery and Bijou Nursery, Wateringbury. (T&Cs apply)

Contact suttonvalencegardeners@gmail.com

or call 01622 693837

Leeds Amateur Dramatics Society

Presents



Plays and Picnics



Friday 7th & Saturday 18th June 2024

Yes, this village favourite is back for 2024!

Save the dates - Don't miss out!

Come along on either evening and watch 2 short amusing plays with a break in between to enjoy your picnic in the Old Vicarage Garden.

Arrive 6.30pm for a 7pm start

The Old Vicarage, Lower Street,

Leeds Village ME17 1RJ

Entry is free but we ask for a donation as all profits go to local charities.

Bring your own chair, picnic & drinks.

Park in Church car park and walk through the churchyard towards the main road.

Facebook: LADSamdram E-Mail: ladsamdram@gmail.com

Learn Bricklaying with Us

Looking for a unique and hands-on gift idea or a new hobby?
Our tailored bricklaying lessons bring the joy of creating your
own garden wall, BBQ or cosy fireplace to your doorstep!
We provide tools and knowledge. You provide the project!

Schedule a free consultation.

****No upfront payments****

Call Mark on 07889 187024 or email

mark@weeksbuilding.co.uk

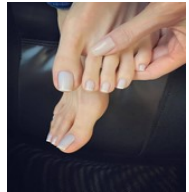


Kent Foot Health

By Vicky Piper S.A.C Dip.FHC

MOBILE FOOT HEALTH PRACTITIONER

***FOR ALL OF YOUR FOOT HEALTH
CARE IN THE COMFORT OF YOUR OWN HOME***



NAIL CUTTING, THICKENED NAILS, INGROWN TOENAILS, CORNS,
CALLUSES, FUNGAL NAIL AND SKIN
INFECTIONS, CRACKED HEELS, DIABETICS

- ◆ Evening and weekend appointments available
- ◆ Every Friday clinics at Ledian Gardens, Leeds
- ◆ Email Vicky at **Kentfoothealth@gmail.com**
or call: **07747 083497** to make your appointment

Look after your feet so they can continue taking you places

CARPETS

SUPPLY & FITTING SERVICE WITH HOME SELECTION



OVER 40 YEARS EXPERIENCE

ALAN POULTON

TEL 843019

CARING FOR CATS BOARDING CATTERY

Furtherfields Farm

- *Heated Accommodation*
- *Individual Runs*
- *Boarding 365 days a year*
- *Quiet rural location*
- *Collection and Delivery Service*
- *Inspection visits welcome*
- *Family Run Business*
- *Cat only boarding*

**Contact Julie & Ian Stevens, Furtherfields, Caring Lane, Leeds
Telephone 01622 861288 Email : info@furtherfields.co.uk**

Point of lay hens and Free Range Eggs available

Heritage Building Services Ltd

Professional local Kingswood builder

- Over thirty years' experience – extensions, renovations and alterations, fireplaces, roofing, soffit, fascias and guttering, patios and walls, fencing, block paved drives, groundwork and much more...
- Free, honest estimates

Paul Bowman 📞 **07731 974 548** | 🏠 **01622 298532**

LEEDS VILLAGE HALL

Available at competitive
rates for

WEDDINGS – PARTIES – MEETINGS

Max Capacity 216

Telephone : 863481

www.leedsvillagehall-kent.co.uk



David Jenkins

01622 851186 & 0791 4380521
info@allfixplumbing.co.uk

General Domestic Plumbing
Repairs & installation
Home maintenance & repairs
Fully insured
Odd jobs - no job too small
FREE QUOTES
NO CALL OUT CHARGE
FRIENDLY PROFESSIONAL ADVICE

*Why not
advertise here?
Ring*

01622 862316
for details

Sarah Willsey MCFHP MAFHP

Foot Health Professional

Mobile Foot Health Professional service
in the comfort of your own home

TREATMENTS

- Corns & calluses
- Hard skin & Cracked heels
- Diabetic/High Risk Foot Care
- Ingrown toe nails
- Thickened fungal nails
- Toe nail cutting and care
- Verrucas



PRICES
£40
Over 65
£35

Mobile: 07500 041535

Email: sarah@yourhealthyfeet.co.uk

Web: www.yourhealthyfeet.co.uk



EMBROIDERY SPECIALISTS

Offering embroidery services in Kent
for over 10 years

No minimum order

Huge catalogue of garments &
products to choose from

Happy to help with artwork or design needs

- Sportswear
- School Uniform
- Catering Aprons
- Workwear
- Kids Clothing
- Towels
- Bags & Accessories
- Headwear

And so much more!

www.octomuffin.co.uk
info@octomuffin.co.uk



PROUD TO BE SERVING THE COMMUNITY SINCE 1965

Your fully independent, family owned, Funeral Directors, serving the local community with compassion and the highest standards of service and professionalism.

With our 24-hour emergency service, we are only a telephone call away.

At the earliest stage possible, you will speak directly with one of our experienced Funeral Directors, who will be there to help, support and guide you through the whole of the funeral process.



Headcorn Road, Grafty Green, Maidstone, Kent ME17 2AP.

01622 850840

Email – enquiries@awcourt.com
Website – www.awcourt.com



A.W. Court is a Trading Division of West & Coe Limited, 602 Rainham Road South, Dagenham, Essex RM10 8YP.



Warford Computers
Technology made easy

Computer Problems?

Any computer related issues

Contact Dean on

07722 293187

info@warford-computers.co.uk

NO FIX NO FEE NO CALL

OUT CHARGE

£30 PER HOUR



Thorneloe & Co
solicitors • since 1989

Part of
Hallett & Co



Based in Lenham, we provide a friendly, high quality, personal service tailored to your specific needs.

For you and your family....

- Wills, Probate and Tax Planning
- Trusts and Estate Administration
- Lasting Powers of Attorney
- Family and Employment Law
- Buying and Selling Your Home
- Court of Protection
- Dispute Resolution/Property Litigation
- Personal Injury

For you and your business....

- Agriculture
- Commercial Property
- Buying or Selling a Business
- Business Contracts / Finance
- Employment Law
- Dispute Resolution / Property Litigation

01622 859416

lenham@hallettandco.co.uk

www.hallettandco.co.uk

St Mary's House, The Square, Lenham, Kent ME17 2PH



WHY PAY MAIN DEALER PRICES?

Servicing & MOT for all makes & models of cars/vans (up to 3500kg)
Air-conditioning serviced & regassed
Tyres, Exhausts, Clutches, Tracking, Cambelts

Under the new EU Directive you do not have to have your new vehicle maintained at a main dealership – you still keep your warranty

Loan car available while your vehicle is being repaired or serviced

**Call us today on
01622 842445**

Went's Service Station
(On the Lenham Rd out of Kingswood)
Ulcombe Hill, Ulcombe,
Maidstone, ME17 1DJ

Why not advertise here?

**Ring 01622 862316
for details**

Harrietsham Computers

Computer Problems? Need an upgrade or a new machine?
Just want some extra tuition?
For local, friendly, experienced help, call Mike Cuerden on **01622 859442 or 07963 020092**



*No call out fee,
reasonable rates
Private &
Commercial work*

Why not advertise here?

**Ring 01622 862316
for details**



Pest Purge Ltd

For all your pest problems Wasps, Rats, Mice, Squirrels, Fox, Rabbits, Bugs & Ants
No job too small, same day support



www.pestpurge.co.uk

Call 01622 842481 or 07758 615101



K.W.J.
50 CHARLESFORD
AVENUE
KINGSWOOD
ME17 3PH

I am open Wed, Thurs,
Friday 9-5pm
and Saturday 9-1pm
Cost £10

Please ring for an
appointment
KEN JURY on 07521
289406

MOWER PLANT SERVICES LTD.
www.mowerplantservices.co.uk
Tel: 01622 890046

SUNPATCH FARM, HEADCORN RD,
SMARDEN, TN27 8PJ

Open: Mon-Fri 8:30am – 5:30pm,
Sat 8:30am – 1pm

SALES ~ SERVICE ~ REPAIRS ~ PARTS

Push Mowers, Ride on Mowers, Brush Cutters,
Water Pumps, Hedge Trimmers and much more

Why not
Advertise

Here?

Ring
862316

For Details

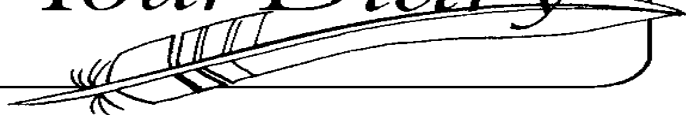


Gemma Wallace
Friendly Professional hairdresser
Level 3 Qualified
15 years top Salon Experience
[Fully Insured](#) **07759 274176**

01622 861424 [Facebook.com/gemhairdesigns](https://www.facebook.com/gemhairdesigns)

Blowdrys
Wet cuts
Cut and Blowdrys
Weaved Highlights
Full Head Colours

For Your Diary



- May** 5 SVGA Talk—For venue contact Ross : **01622 693837**
9 Leeds W.I. Meet : Village Hall—7.30pm
14 Annual Parish Meeting and Leeds Parish Council meet :
Village Hall—7pm
15 Craft & Natter : Village Hall—11am
23 Memorial Hall AGM : Village Hall—8pm
17-27 ART Exhibition : Pilgrims Way Artists –See page 11
- June** 6 Leeds Village D Day Celebration—see front page
7 Plays & Picnics : Old Vicarage Garden—6.30pm
9 North Downs Walk—see page 14
18 Plays & Picnics : Old Vicarage Garden—6.30pm
- Aug** 24 Leeds Village Big Lunch : Playing Fields—see page 8
- Sept** 8 SVGA Autumn Show—SV Village Hall
- Oct** 6 SVGA Talk—For venue contact Ross : **01622 693837**
- Nov** 24 SVGA AGM—For venue contact Ross : **01622 693837**

The views expressed in this magazine are not necessarily the opinions of the Editor or Publisher. Whilst every care is taken to present the articles with an innocent opinion, the Editor and Publisher take no responsibility for any effects the articles or advertising features may cause.

THIS MAGAZINE IS PUBLISHED BY THE LEEDS AND BROOMFIELD PAROCHIAL
CHURCH COUNCIL © Magazine Copyright Leeds & Broomfield PCC 2024

ICS Member - Fully Insured

Chimney Sweep

Peter Walsh

01622 880958 / 07895 645318



J.J. AULT
N.C.H., S.C.C., Arb.
Tree Surgeon
For Professional
Arboricultural Services
jeremyault@btinternet.com

Telephone: 01622 858002

Climbing to the top since 1978



FOUR JAYS GROUP

TOILET, SHOWER AND CHILLER HIRE



Prestige Toilet Trailers & Individual Toilets

Shower and Chiller Trailers for Events

Hand Wash & Hand Sanitiser Stations

Site Toilets & Welfare Units – For Short or Long Term Hire

Effluent Tankering Service inc. Cess Pits & Septic Tanks

Temporary Canteens, Offices & Stores

Plus China, Cutlery, Glassware, Linen & Ovens from

JANET'S CHINA HIRE Tel: 01622 844646

CONTACT US AS YOUR LOCAL SUPPLIER

Tel: 01622 843135

enquiries@fourjays.co.uk, www.fourjays.co.uk

Helen Whately MP

Member of Parliament for Faversham and Mid Kent.
I work for you. If you have a problem you think I can help you
with, please contact me.

House of Commons

London, SW1A 0AA

0207 219 6472

helen.whately.mp@parliament.uk

www.helenwhately.org.uk



**Enaid
DESIGN**

**CURTAINS, BLINDS
& INTERIOR DESIGN**

Designer Fabrics, Wallpapers & Paints
Made-to-measure Curtains & Blinds
Re-makes & Alterations • Pelmet
Installation Service • Tracks & Poles
Re-upholstery & Loose Covers
Awnings • Original Artwork

SEWING COURSES AVAILABLE

For a **FREE** consultation & measure
call Diane Sergeant on **01622 672 023**

www.enaid-design.co.uk

Strictly Fitness

Come along to our weekly local
Ballroom Fitness and Pilates clas-
ses by Strictly Fitness held in
the beautiful studio located at
Ledian Gardens Retirement
Village in Leeds.

Our classes run on Wednesdays
at the following times :-

**Ballroom Fitness - 10.00 -
10.45am (NO PARTNER REQUIRED)**

Pilates 11.00 - 11.45am

Our classes welcome all abilities
including beginners

Contact Julie on :

07739 638576



**.All Pest Problems.No Job Too Small.
Wasps. Squirrels. Foxes. Rats. Mice.
Rabbits. Ants And Bugs**

**CALL: 07557 377261
or
01622 862507**

Supporting Maidstone and the surrounding area